

390

Snap-action Microswitches

Miniature

SICATRON
elektronik & automation

SICATRON OHG
Pettenkoferstr. 19
58097 Hagen, Germany

Fon +49 (0) 2331 473329-0
Fax +49 (0) 2331 473329 200
<http://www.sicatron.de>

390

Characteristics	<ul style="list-style-type: none">■ wiping contacts■ leaf spring mechanism■ High Amporage 25 A■ Rast 5 terminal
Rating	up to 25 A at 250 VAC
Dimensions	28.8 × 20.4 × 10.06
Actuator	■ Plunger, plain lever, roller lever
Approvals	UL, CSA, ENEC



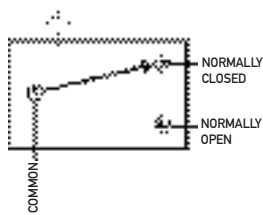
Popular Products

Ordering Reference	Actuating Force (g)	Operating pos. (mm)	Terminal	Contact Gap (mm)	Actuator	Contacts	Electrical rating ENEC	UL
393/40/120	120	14,4–15,17	6,35 × 0,8	1	Plunger	Ag Cd 0	22 (4) A 250 VAC	22 A IHP 125/250VAC
393/40/350	350	14,4–15,17	6,35 × 0,8	1	Plunger	Ag Cd 0	25 (4) A 250 VAC	22 A IHP 125/250 VAC

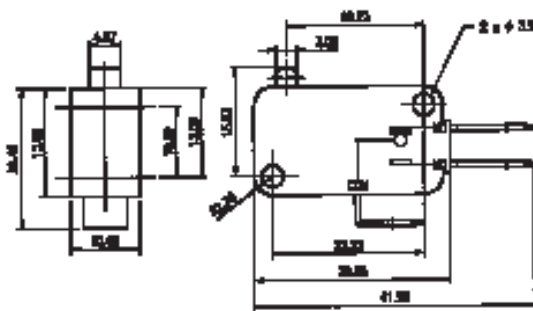
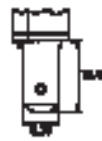
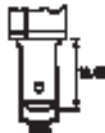
Specifications

Housing	Glass-filled flame retardant Nylon 6,6
Plunger	Glass-filled flame retardant Nylon 6,6
Mechanism	Snap action, single pole leaf spring mechanism
Functions	Change over, Normally open, Normally closed
Contacts	Silver and Silver cadmium oxide
Terminals	Solder, Faston and Rast 5 terminals
Temperature range	-10°C to +85°C
Mechanical life	10 ⁷ cycles minimum (3 mm gap 10 ⁶) (impact-free actuation)
Protection	IP40 (enclosure)
Mounting	Side mounting
Actuators	Plunger, plain lever, roller lever

Circuit diagram



Dimensions

392
Solder398
Rast 5
Fast on393
6.35 × 0.8
Fast on

Recommended maximum electrical ratings A3 shown below

Versions	ENEC	UL
120 g	22 (4) A, 250 VAC, 50 E3, T85	22 A IHP 125/250 VAC T85
350 g	25 (4) A, 250 VAC, 50 E3, T85	22 A IHP 125/250 VAC T85

Operating Characteristics

Actuator	Reference	Actuating Force Maximum (g)	Release Force Minimum (g)	Free Position Maximum (mm)	Operating Position	Length (mm)	Movement Differential Maximum (mm)	Overtravel Minimum (mm)
Plunger	39-/40/120	120	40	15,93	14,4-15,17		0,25	1,32
	39-/120/350	350	100	15,93	14,4-15,17		0,25	1,32
Plain lever (Back position)	ZD0			16,99		22,56		
	ZD1			18,61		33,9		
	ZD2			25,8		84,43		
Roller lever	ZDS0			22,15		19,67		
	ZDS1			23,86		31,7		

Ordering Reference

Type	39		
Terminal type	2	solder	
	3	6,35 × 0,8 fast-on	
	8	6,35 × 0,8 Rast 5†	
Contact gap	40	1 mm standard	
Operating force	120	120 g	
	350	350 g	
Circuit	no digit	change over	
	NO	Normally open	
	NC	Normally closed	
Actuator	no digit	plunger	
	ZD0	Plain lever	22,5 mm
	ZD1	Plain lever	33,9 mm
	ZD2	Plain lever	84,4 mm
	ZDS0	Roller lever	19,67 mm
	ZDS1	Roller lever	31,7 mm