

KB5EQ

Positive-action Switches

Standard

SICATRON
elektronik & automation

SICATRON OHG
Pettenkoferstr. 19
58097 Hagen, Germany

Fon +49 (0) 2331 473329-0
Fax +49 (0) 2331 473329 200
<http://www.sicatron.de> info@sicatron.de

KB5EQ

Characteristics

- Positive-action (forced double break) contacts
- >3 mm contact gap
- High electrical rating
- Encased for electrical insulation
- Long overtravel

Rating Up to 250 VAC, 20 A

Dimensions (mm) 54.2 × 50.1 × 17.7

Actuator Plunger, roller plunger (in line with case), roller plunger (across line of case)

Approvals UL and CSA



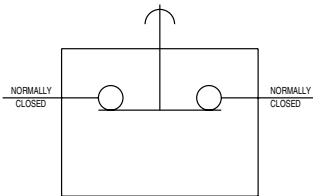
Preferred Range

Ordering Reference	Actuating Force (N)	Actuating Force (ozf)	Sealing	Operating pos (mm)	Operating pos (in)	Terminal	Circuit	Actuator	Contacts	Electrical rating
KB5EQULS	10.0	36.0	IP40	57.3	2.25	Screws	NC	Plunger	Ag/AgCd0	Up to 250 VAC, 20 A
KB5EQRULS	10.0	36.0	IP40	68.7	2.7	Screws	NC	Roller plunger (in line)	Ag/AgCd0	Up to 250 VAC, 20 A
KB5EQR2ULS	10.0	36.0	IP40	68.7	2.7	Screws	NC	Roller plunger (across line)	Ag/AgCd0	Up to 250 VAC, 20 A

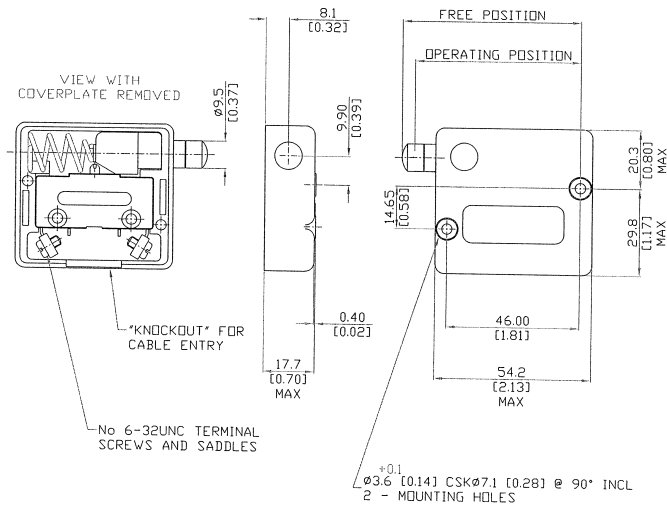
Specifications

Housing	Polycarbonate
Plunger	Mild steel, bright nickel plate
Mechanism	Single pole, double break, positive action
Functions	Normally closed
Contacts	Fixed – silver, Moving – silver cadmium oxide
Terminals	6/32 screws and clamps
Temperature range	-10°C to +85°C
Mechanical life	10 ⁶ cycles minimum, impact-free actuation
Protection	IP40
Mounting	Side mounting
Actuators	Plain plunger - mild steel, bright nickel plate, roller plungers - mild steel, bright nickel plate, nylon roller
Approvals	UL and CSA

Circuit diagram



Dimensions

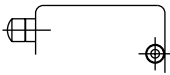
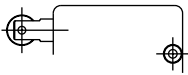
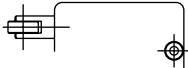


Recommended maximum electrical ratings

Voltage (max)	Load (A)	Inductive load	Horsepower	Approval
250 VAC	20 (0.75 pf)	-	-	ULS 1054/CSA 22.2 No. 55 - 100,000 operations
250 VAC	-	-	2 HP	ULS 1054 - Horsepower - 6,000 operations
125 VAC	-	-	1 HP	ULS 1054 - Horsepower - 6,000 operations
0 - 15 VDC	15	-	-	General rating - 50,000 operations
15 - 30 VDC	10	-	-	General rating - 50,000 operations

KB5EQ

Operating Characteristics

Actuator	Reference	Actuating force		Free position		Recommended operating position		Recommended contact separation		Contact gap at total travel		Total travel position	
		Maximum (N)	Maximum (ozf)	Maximum (mm)	Maximum (in)	Minimum (mm)	Minimum (in)	Minimum (mm)	Minimum (in)	Maximum (mm)	Maximum (in)	Maximum (mm)	Maximum (in)
Plunger 	KB5EQULS	10.0	36.0	61.9	2.44	57.3	2.25	2 × 1.5	2 × 0.06	2 × 3.0	2 × 0.12	*	
K Lever 	KB5EQRULS	10.0	36.0	73.7	2.90	68.7	2.70	2 × 1.5	2 × 0.06	2 × 3.0	2 × 0.12	63.2	2.48
KR Lever 	KB5EQR2ULS	10.0	36.0	73.7	2.90	68.7	2.70	2 × 1.5	2 × 0.06	2 × 3.0	2 × 0.12	63.2	2.48

Recommended minimum contact separation 2 × 1.5 mm (2 × .06) indicated when groove in plunger lines up with case. Operating characteristics are specified from mounting holes.

* Plunger can be depressed flush with housing. The housing should not be used as an end stop.

Ordering Reference

Type	KB5EQ	
Switch range	KB5EQ	
Actuators	No digit	Plain plunger
	R	Roller plunger (in line with case)
	R2	Roller plunger (across line of case)
Approvals	UL and CSA	