

Metal-bodied limit switches

ENM 2

Standard switch according to DIN EN 50041
Protection class IP 65



- Increased number of switching functions for safety applications
- Galvanically separated contacts
- Forced disconnection of NC contacts (type dependant)
- Person-protection function ⊕ (depending on model)
- Protection class IP 65
- Aluminum body and lid
- Operating device: 4 x 90° actuator positions
- Cable entry M 20 x 1.5
- International approvals

Mounting

- 2 x M 5 screws, adjustment via elongated holes
- 2 x M 5 screws for safety applications without additional attachment

Mounting advantages

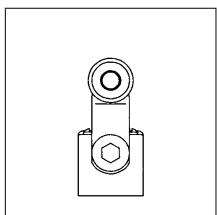
- Increased wiring space
- Earthing surface on same level as switching system
- Turret
Lever: 7.5° / 15° adjustable
- Contact made independent of direction
- Screw terminals with self lifting clamps for easy wiring
- Fine adjustment of switching point via adjusting screw
- Captive lid screws

Options

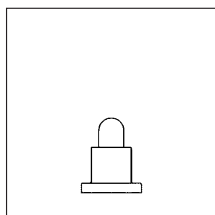
- Latching with contact locking (strain lock-release for safety reasons)
- LED indication of switching status
- EEx certificated versions available acc. ATEX 100 a guideline 94/9/EG
⊕ II 2 G EEx d II C T6
TÜV 03 ATEX 2043 X



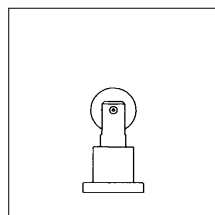
Standard actuating element DIN EN 50041



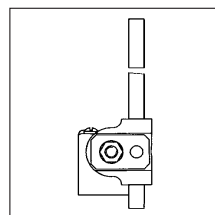
Form A



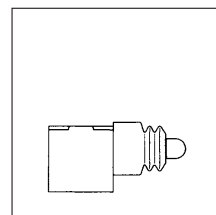
Form B



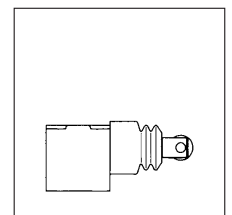
Form C



Form D



Form F
(available upon request)



Form G
(available upon request)

Metal-bodied limit switches

GC I

Slim design
 Protection class IP 65
 Very large range of actuators
 Multiple pole contacts



CE



- Snap action or slow make & break contacts
- Galvanically separated contacts (type dependant)
- Forced disconnection of NC contacts
- Protection class IP 65
- Aluminum body and lid
- 4 x 90° actuator positions
- Adjustment of the AH lever arm position in 90° increments
- Single direction operation of contacts with AH actuator (user selectable)
- Cable entry M 20 x 1.5
- Terminals numbered in accordance with DIN EN 50013
- International approvals
- Model range GC II for additional switch functions (on request)

Mounting

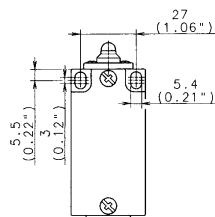
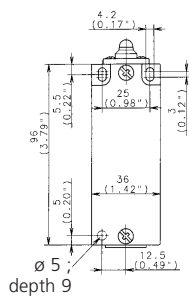
- Adjustable – two slots for M 4 screws

Benefits

- Screw terminals with self-lifting clamps for easy wiring
- Easily exchanged contact block with latch holding device
- Contact switch point adjustable with adjusting screw

Options

- Contact lock (button reset)
- Housing size I
Slots for M 5 fixing screws (27 mm pitch)
- EEx certificated versions available acc. ATEX 100 a guideline 94/9/EG
 Ⓢ II 2 G EEx d II C T6
 TÜV 03 ATEX 2043 X



(For safety applications use 4 mm \varnothing dowel in pre-formed blind hole on underside of switch body or select body with M 5 round holes)