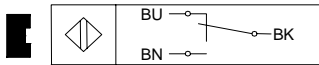
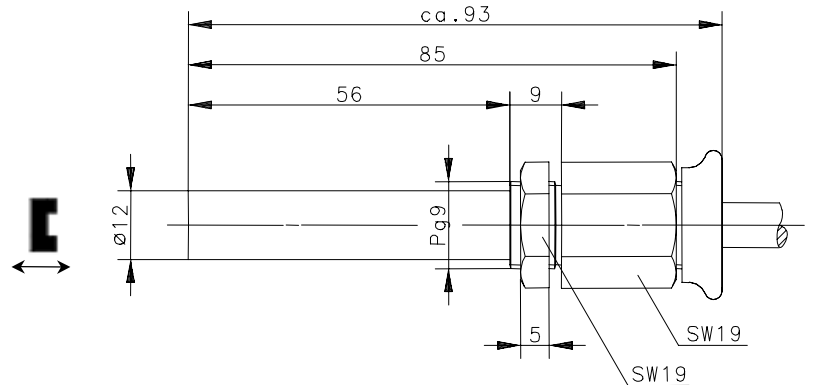
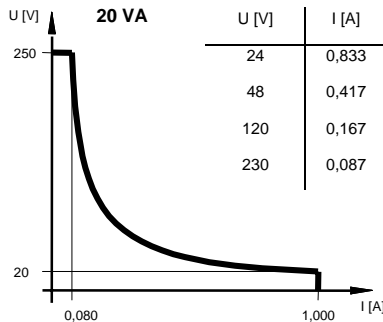


Series MAK-15

Wiring diagram



Switching diagram



Cable length	Description	Article number
1m	MAK-1513-LEX-1	6316315308
3m	MAK-1513-LEX-3	6316315001
7m	MAK-1513-LEX-7	6316315344

Electrical data

Assured operating distance	S _a	10mm
Output		changeover function
Reed contact:		
max. voltage		250VDC
max. switch current		1A
max. switching		20VA
mechanical lifetime		3x10 ⁸ switchings, however, according to the load resetability
Repeat accuracy	R	± 0,1mm
Differential travel	H	max. 20mm
Shock		10 g (11ms, 1/2 sinus-wave)
Vibration		15 g (50-2000Hz)
Reference magnet		T-62 N/S

Mechanical data

Housing	PA6
Ambient air temperature	+5°C ... +60°C (when the cable can be moved) -20°C ... +60°C (when the cable can not be moved)
Type of protection	IP67 to IEC 529, EN 60529
Connection	PVC-cable 3 x 0,75mm ² (A05VV-F)
Assembly position	optional
Fixing accessories	hex nut PG9, POM

EC conformity

CE 0032

Approvals

KEMA (Ex)

II 2 GD EEx m II T6 T85°C / KEMA 03ATEX1399 X

This document will not become the contractual basis; the details included herein do not constitute any descriptions of expected conditions, so that warranties/claims for defects on account of possible variations of the actual from the here described condition are excluded. Subject to modifications and amendments.

Date of issue: 05.03.2004 / Page 1 of 1
Document: 7100050_en / Last update: 2 / 0101-04



Rated operating distance
Mounting flush /non-flush
Switching functions
Model description
Part number
Wiring diagram (page/Pos.)
Stock status: Ex stock/Built to order
Mechanical data
Housing material
Cable length 2 m/6.5 ft. mm
Accessories (page/Pos.)

M 5; 25 mm length

1 mm (0.04")

●/-
NAMUR / B
KIB-M05EA/
001-2
658.1699.009
263/8
●/-

CuZn39Pb3
PVC 2 x 0.14
-

M 8 x 1; 32 mm length

1.5 mm (0.06")

●/-
NAMUR / A
KIB-M08EA/
1.5-2
658.1601.001
263/8
●/-

stainless steel 1.4305
PVC 2 x 0.25
-



Rated operating distance
Mounting flush /non-flush
Switching functions
Model description
Part number
Wiring diagram (page/Pos.)
Stock status: Ex stock/Built to order
Mechanical data
Housing material
Cable length 2 m/6.5 ft. mm
Accessories (page/Pos.)

M 8 x 1; 32 mm length

2 mm (0.08")

-/●
NAMUR / A
KIN-M08EA/
002-2
658.1601.002
263/8
-/●

stainless steel 1.4305
PVC 2 x 0.25
-

M 12 x 1; 30 mm length

2 mm (0.08")

●/-
NAMUR / A
KIB-M12EA/
002-2
658.1624.004
263/8
●/-

CuZn39Pb3
PVC 2 x 0.25
-

Electrical and mechanical data for NAMUR inductive sensors

Electrical data
Nominal input voltage 8.2 V DC
Input resistance 1 kΩ

Output current

	Diagram A	Diagram B
damped	≤ 1 mA	≤ 1.1 mA
undamped	≥ 4 mA	≥ 2.2 mA

Mechanical data
Temperature range min./max. -25 °C/+70 °C
-13 °F/+158 °F
Protection class IP 67/NEMA 4



M 12 x 1; 32 mm length

4 mm (0.16")

-/●

NAMUR / A

KIN-M12EA/

004-2

658.1625.006

263/8

●/-

CuZn39Pb3

PVC 2 x 0.25

-



M 18 x 1; 35 mm length

5 mm (0.20")

●/-

NAMUR / A

KIB-M18EA/

005-2

658.1626.007

263/8

●/-

CuZn39Pb3

PVC 2 x 0.5

-



M 18 x 1; 35 mm length

8 mm (0.32")

-/●

NAMUR / A

KIN-M18EA/

008-2

658.1627.008

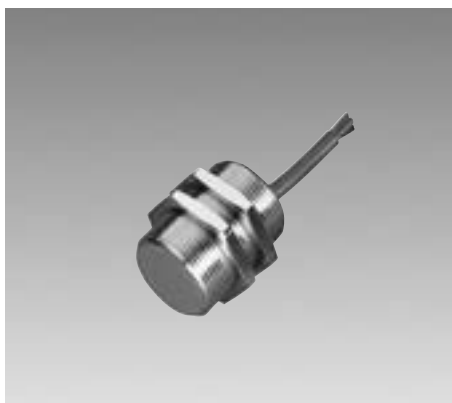
263/8

-/●

CuZn39Pb3

PVC 2 x 0.5

-



M 30 x 1,5; 31 mm length

10 mm (0.39")

●/-

NAMUR / A

KIB-M30EA/

010-2

658.1699.010

263/8

●/-

CuZn39Pb3

PVC 2 x 0.5

-

