

# K5

## Snap-action Microswitches

Special Types

**SICATRON**  
elektronik & automation

SICATRON OHG  
Pettenkoferstr. 19  
58097 Hagen, Germany

Fon +49 (0) 2331 473329-0  
Fax +49 (0) 2331 473329 200  
<http://www.sicatron.de> [info@sicatron.de](mailto:info@sicatron.de)

### K5

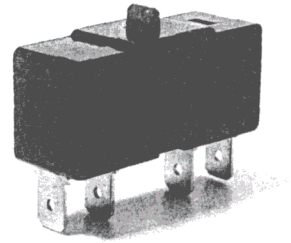
Characteristics ■ Single pole, two circuit double break mechanism  
■ Long overtravel plunger variant with panel mounting option

Rating Up to 250 VAC, 16 A

Dimensions (mm) 41 x 19 x 15.5

Actuator Plunger, ramp plunger, plain lever, roller lever, spring plunger

Approvals UL, CSA



### Preferred Range

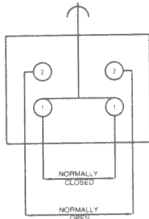
Ordering Reference	Actuating Force		Sealing	Operating pos.		Terminal	Circuit	Actuator	Contacts	Electrical rating
K5UL	2.8 N	10.00 ozf	IP40	17.4 mm	0.68 in	Faston	SPDT	Plunger	Silver	Up to 250 VAC, 16 A
K5CUL	2.8 N	10.00 ozf	IP40	16.7 mm	0.66 in	Faston	SPDT	Ramp plunger	Silver	Up to 250 VAC, 16 A
K5KUL	1.4 N	5.00 ozf	IP40	20.3 mm	0.80 in	Faston	SPDT	Plain lever	Silver	Up to 250 VAC, 16 A
K5KRUL	1.5 N	5.40 ozf	IP40	32.0 mm	1.26 in	Faston	SPDT	Roller lever	Silver	Up to 250 VAC, 16 A
K5QUL	2.8 N	10.00 ozf	IP40	17.9 mm	0.71 in	Faston	SPDT	Spring plunger	Silver	Up to 250 VAC, 16 A

# K5

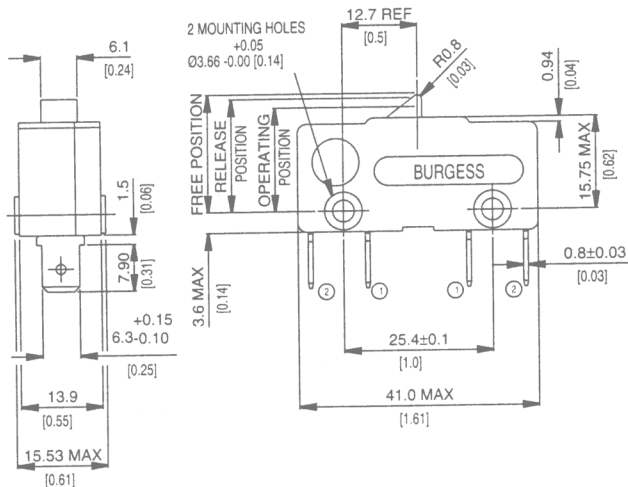
## Specifications

■ Housing	Glass fibre reinforced nylon
■ Plunger	Nylon
■ Mechanism	Two circuit double break change-over
■ Contacts	Silver
■ Terminals	6.3 mm (0.25 in) faston
■ Temperature range	-10° C to +85° C
■ Mechanical life	10 <sup>6</sup> cycles minimum (impact free actuation)
■ Type of protection	IP40
■ Mounting	Side mounting
■ Actuators	Plain lever – stainless steel. Roller lever - stainless steel, nylon roller

Circuit diagram



Dimensions




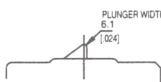
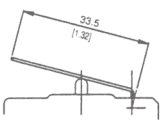
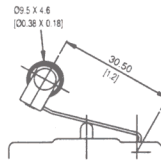
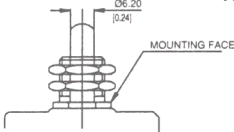
## Recommended maximum electrical ratings

Voltage (max)	Resistive load A	Inductive load	Horsepower	Approval
250 VAC	16 A (0.75 pf)			UL 1054/CSA 22.2 No. 55 - 6,000 operations
125 VAC	16 A (0.75 pf)			UL 1054/CSA 22.2 No. 55 - 6,000 operations
250 VAC			1/3 HP	UL 1054 6,000 operations
125 VAC			1/3 HP	UL 1054 6,000 operations
0 - 15 VDC	15 A			General rating - 50,000 operations
15 - 30 VDC	10 A			General rating - 50,000 operations

Values shown are recommended maximum ratings for single circuit switching

# K5

## Operating Characteristics

Actuator	Reference	Actuating Force		Release Force		Free Position		Operating Position		Movement Differential		Overtravel	
		Maximum N	ozf	Minimum N	ozf	Maximum mm	in	mm	in	Maximum mm	in	mm	in
Plunger 	K5UL	2.8	10.00	1.1	4	19.7	0.78	17.4 ± 0.7	0.68 ± 0.028	1.27	0.05	Plunger can be depressed flush with housing. The housing should not be used as an end stop.	
Ramp plunger 	K5CUL	2.8	10.00	1.10	4.00	19.7	0.78	16.7 ± 0.7	0.66 ± 0.028	2.2	0.09	Plunger can be depressed flush with housing. The housing should not be used as an end stop.	
Plain lever 	K5KUL	1.4	5.00	0.35	1.25	28.0	1.10	20.3 ± 1.5	0.80 ± 0.06	3.2	0.13	Plunger can be depressed flush with housing. The housing should not be used as an end stop.	
Roller lever 	K5KRUL	1.5	5.40	0.38	1.28	38.6	1.52	32.0 ± 1.5	1.26 ± 0.06	3.2	0.13	Plunger can be depressed flush with housing. The housing should not be used as an end stop.	
Spring plunger 	K5QUL	2.8	10.00	1.10	4.00	20.6	0.81	17.9 ± 0.7	0.71 ± 0.028	1.27	0.05	4.6	0.18

## Ordering Reference

Type	K5	
Actuators	No symbol	Plain plunger
	C	Ramp plunger
	K	Plain lever
	KR	Roller lever
	Q	Spring plunger
Approvals	UL	UL and CSA